

S.I.C. WITH SILT TRAP  
 KLARGASTER CLASS 1 BYPASS  
 SEPARATOR WITH COALESCER NSBE030 FOR TANK 1 and NSBE040 FOR TANK 2

ATTENUATION TANK :  
 "MICROSTRAIN STORMTECH" TANK 1:- SC740 WITH A VOLUME OF 864m3  
 "MICROSTRAIN STORMTECH" TANK 2:- MC500 WITH A VOLUME OF 884m3

P.C. MANHOLE CHAMBER  
 WITH HYDROBRAKE  
 FLOW CONTROL DEVICE  
 TANK 1:- 24.33 l/sec  
 TANK 2:- 51.02 l/sec

**GENERAL NOTES**

The Developer/Contractor/Builder is to ensure that the building under construction/alteration is to comply where applicable with the 2010 Building Regulations in respect of all trades involved in the construction of this development.

The Developer/Contractor/Builder should notify BCA of any intended deviations from these plans prior to commencement of development.

All Site Development works to be carried out in accordance with "Recommendations for Site Development Works for Housing Areas" Dept. of Environment.

Contractors must verify all dimensions at the job before commencing any work. No working dimensions to be scaled. This drawing is for the purpose of planning only. Dimensions to blockwork only.

**Revision**

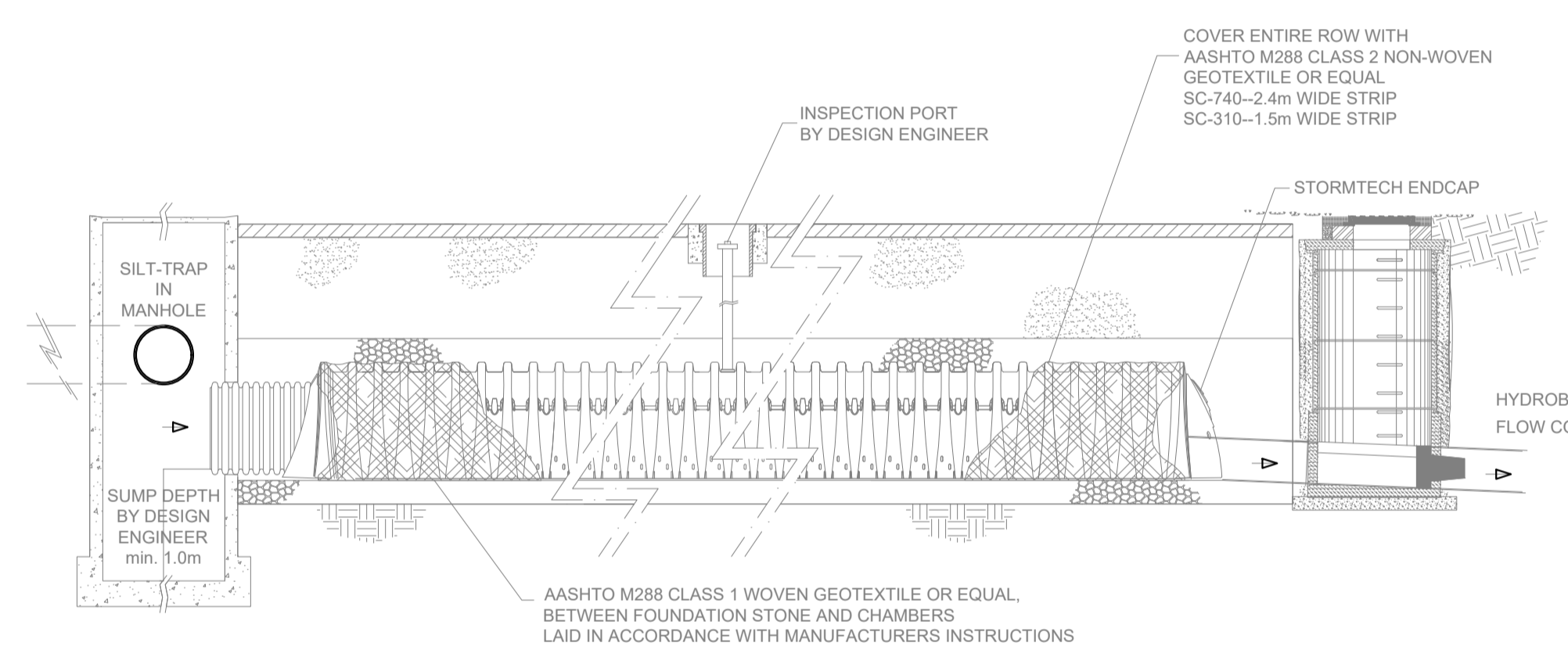
Date Rev.

**SIZES AND SPECIFICATIONS SIZING OF KLARGESTER PETROL INTERCEPTOR**

UNIT NOMINAL SIZE	FLOW RATE (l/s)	PEAK FLOW RATE (l/s)	DRAINAGE AREA (m²)	STORAGE CAPACITY (litres)	UNIT LENGTH (mm)	UNIT DIA. (mm)	ACCESS SHAFT DIA. (mm)	BASE TO INLET INVERT (mm)	BASE TO OUTLET INVERT (mm)	STANDARD FALL ACROSS (mm)	MIN. INLET DIA. (mm)	STANDARD PIPEWORK DIA.
NSBP003	3	30	6070	300	45	1700	150	600	1420	1200	100	500
NSBP004	4.5	45	7500	450	60	1700	150	600	1420	1200	100	500
NSBP006	6	60	3335	600	90	1700	150	600	1420	1200	100	500
NSBP010	10	100	1560	1000	150	2060	200	750	1650	1500	100	700
NSBP015	15	150	815	1500	225	2940	270	750	1650	1500	100	700
NSBP020	20	200	188	2000	300	3890	320	750	1650	1500	100	700
NSBP025	25	250	1880	2500	375	4840	400	750	1650	1500	100	700
NSBP030	30	300	1670	3000	450	5790	480	750	1650	1500	100	700
NSBP040	40	400	2220	4000	600	8230	600	785	2035	2035	100	800
NSBP050	50	500	2970	5000	750	9920	750	800	2035	2035	100	800
NSBP075	75	750	4860	7500	1050	14810	1050	800	2235	2035	100	800
NSBP100	100	1000	5550	10000	1500	19610	1500	800	2235	2035	100	800
NSBP125	125	1250	6944	12500	1875	24540	1875	800	2235	2035	100	800

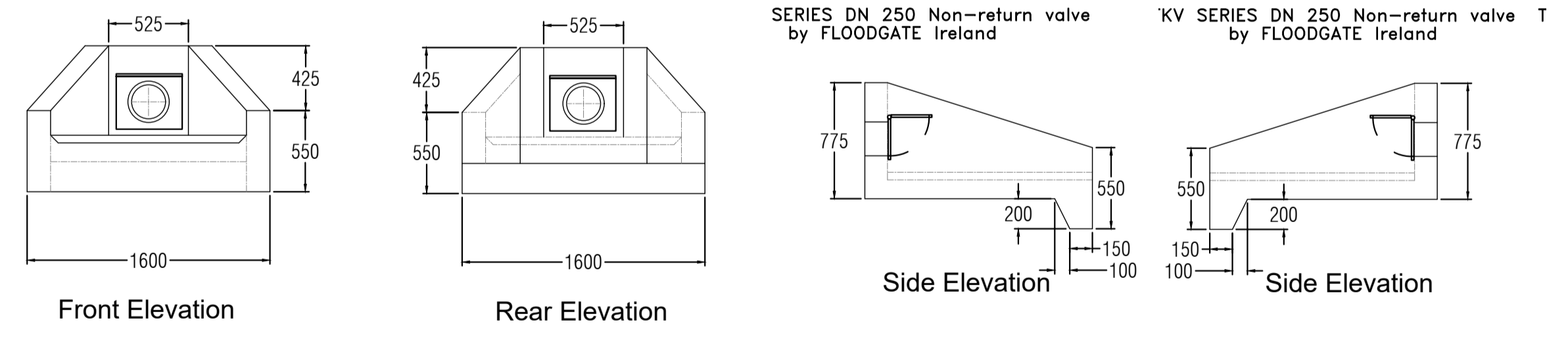
**TYPICAL SECTION THROUGH STORMTECH CHAMBER**

SCALE N.T.S.



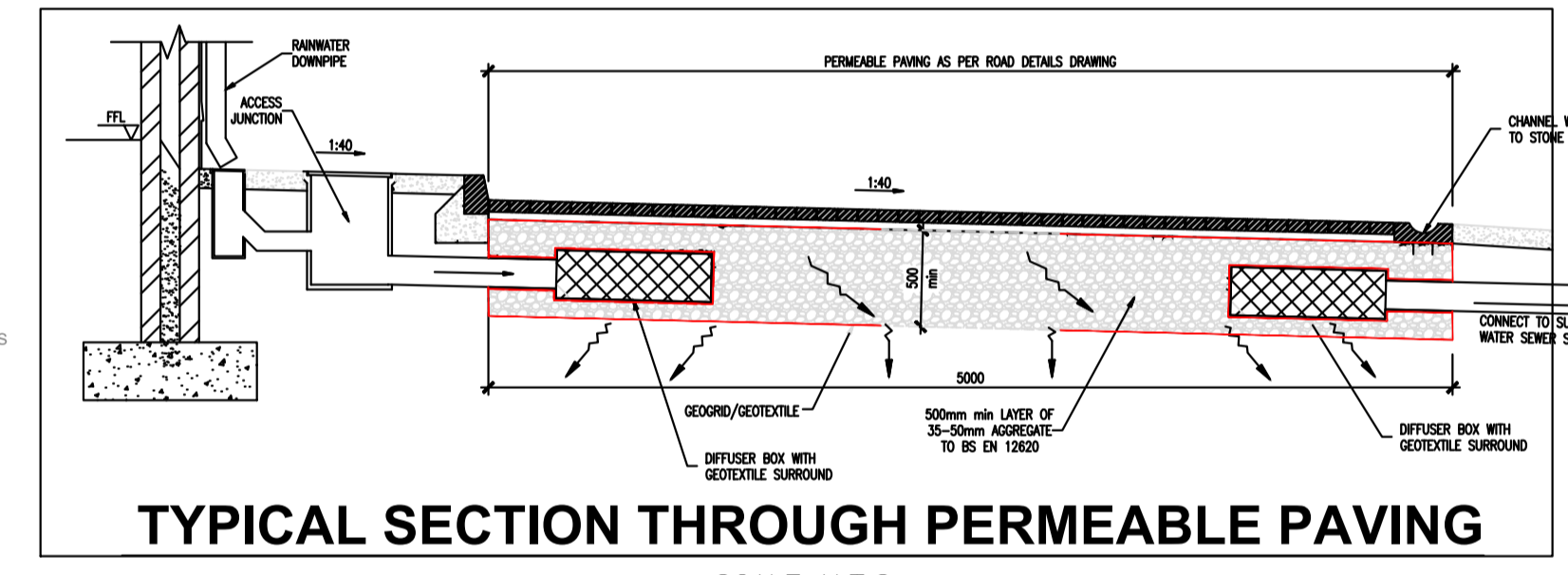
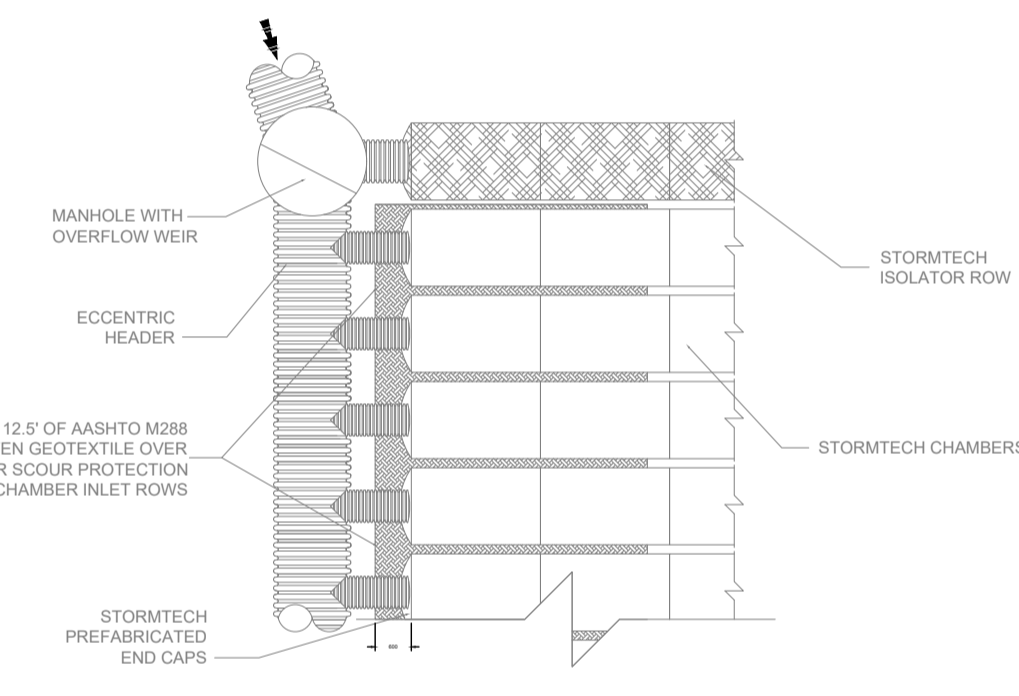
**TYPICAL SECTION THROUGH DISTRIBUTION CHAMBER**

SCALE N.T.S.



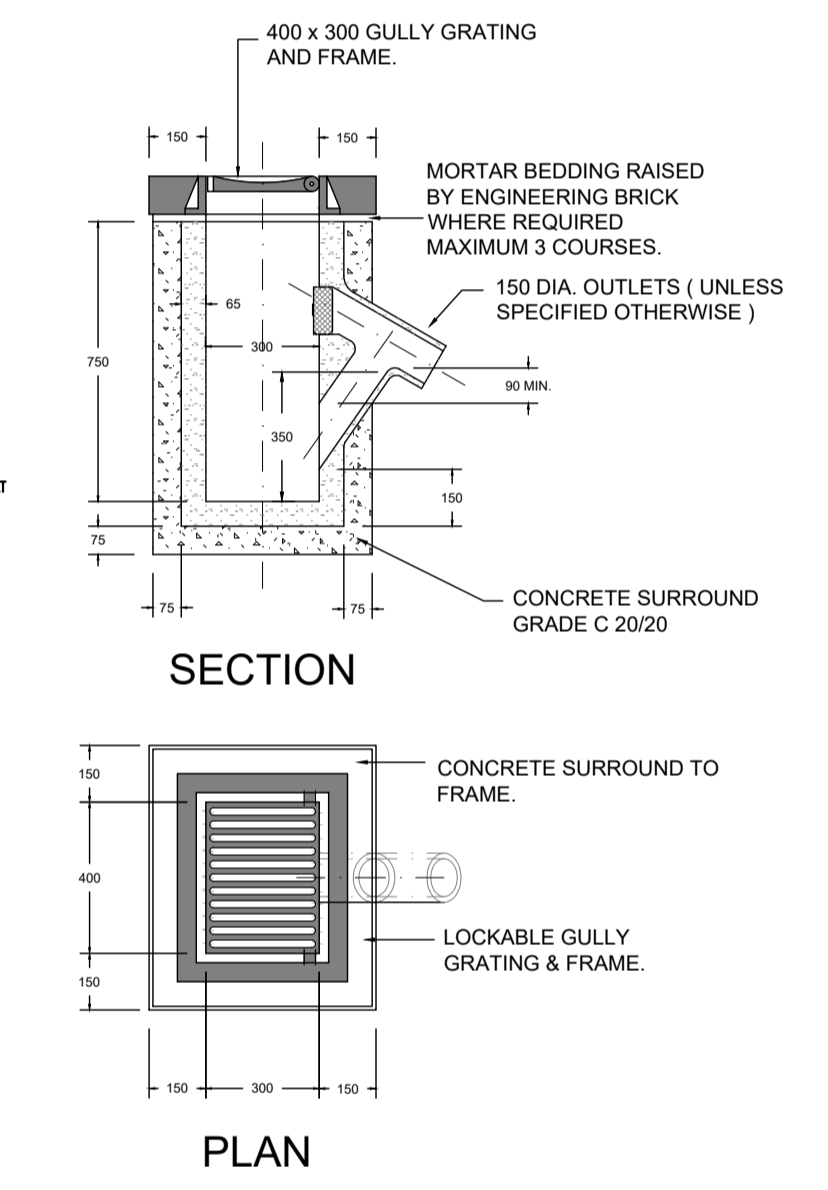
**TYPICAL DISTRIBUTION DETAIL THROUGH STORMTECH CHAMBER**

SCALE N.T.S.

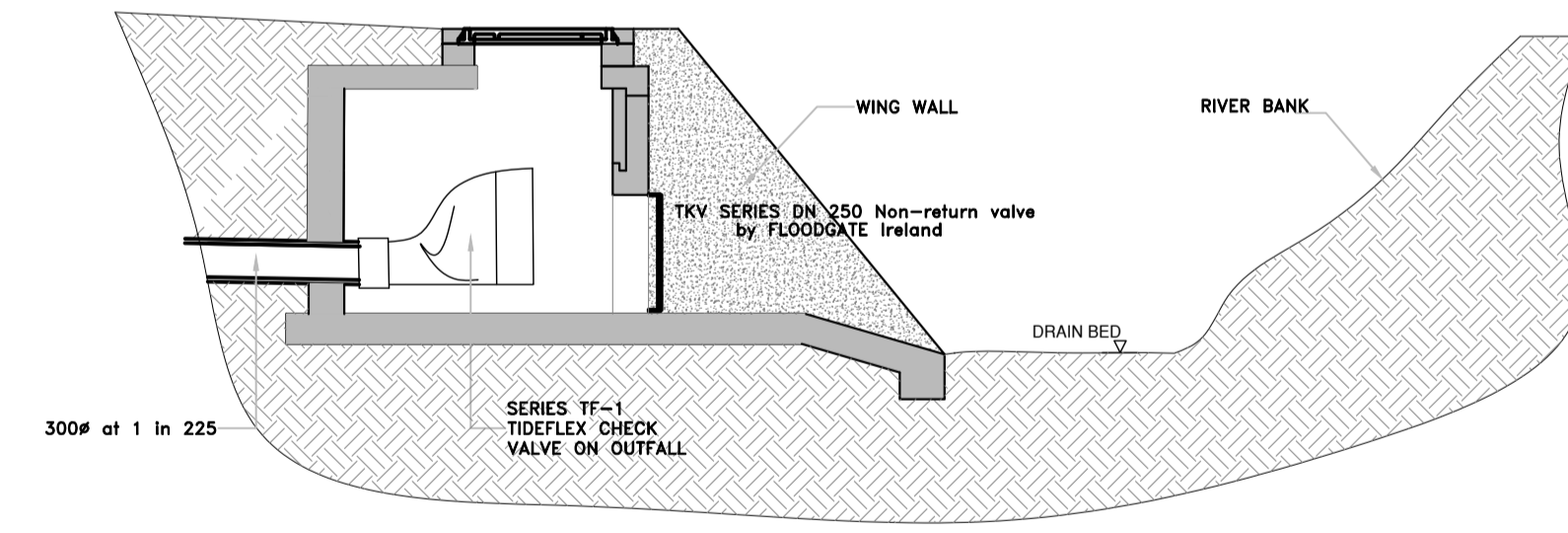


**TYPICAL SECTION THROUGH PERMEABLE PAVING**

SCALE N.T.S.



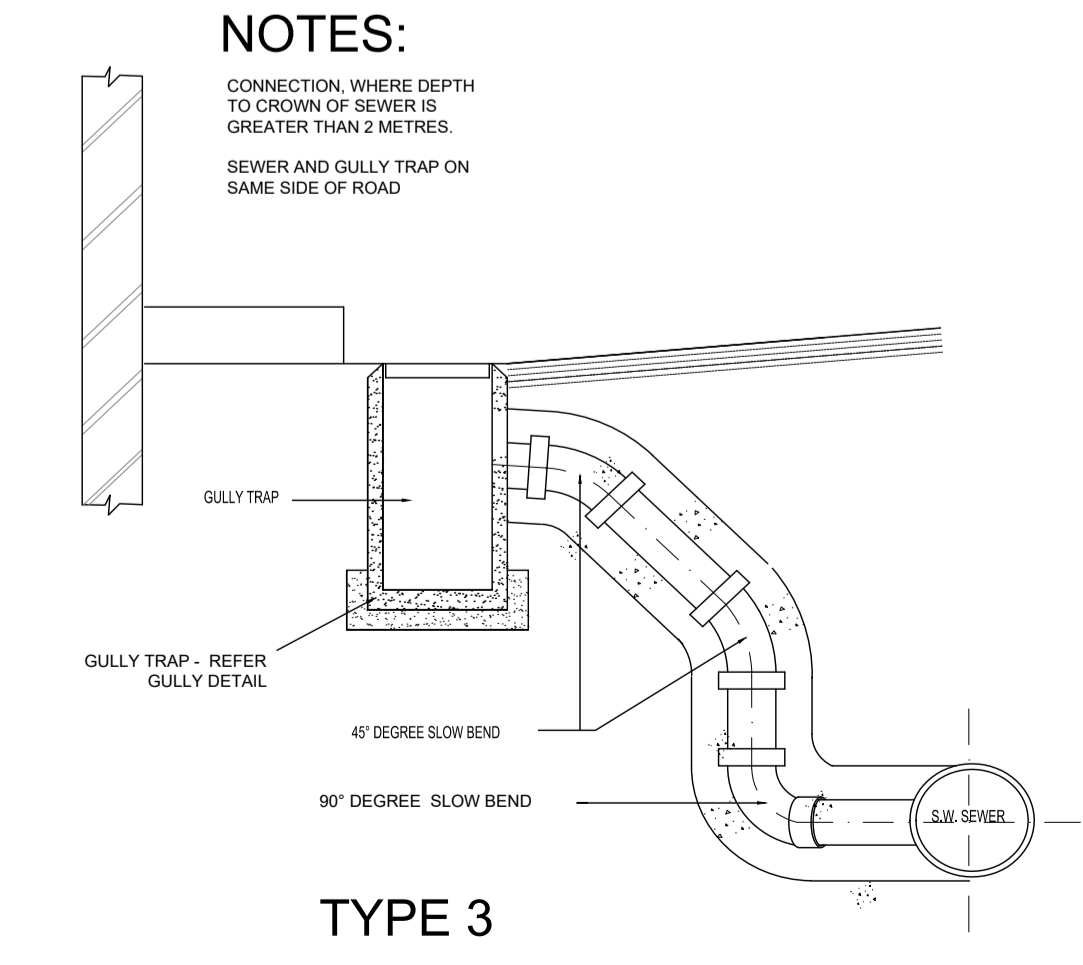
**DETAIL OF RECTANGULAR PRECAST GULLY (scale 1:20)**



**HEADWALL DETAIL AT OUTFALL**

**NOTES:**

CONNECTION, WHERE DEPTH TO CROWN OF SEWER IS GREATER THAN 2 METRES.  
 SEWER AND GULLY TRAP ON SAME SIDE OF ROAD.



**TYPE 3 ROAD GULLY CONNECTIONS**

**NOTES:**

CONNECTION, WHERE DEPTH TO CROWN OF SEWER IS LESS THAN 2 METRES.  
 SEWER AND GULLY TRAP ON OPPOSITE SIDES OF THE ROAD.

**NOTES:**

CONNECTION, WHERE DEPTH TO CROWN OF SEWER IS GREATER THAN 2 METRES.  
 SEWER AND GULLY TRAP ON OPPOSITE SIDES OF THE ROAD.

**TYPE 1 ROAD GULLY CONNECTIONS TO S.W. SEWER ACROSS ROADWAY**

**TYPE 2**

Client: Westar Investments Ltd.

Job: Clane KDA1 SHD

Location: Lands at Capdoo & Abbeylands, Clane, Co. Kildare

Drawing Title: SERVICES - Surface Water Details (SHEET 1 of 3)

**OCC** brian connolly associates CONSULTING ENGINEERS

BSc Eng. MSc, DIC, C.Eng. MIEI  
 The Studio, Wood's Way, Clane, Co. Kildare. T. 045 892211 F. 045 892420  
 e: bcassoc@eircom.net

**Planning - SHD 02c**

job no	18002
date	02.11.18
scale	As Shown @ A1
drawn by	Brian Connolly
cad ref no	
planning ref no	300
fire ref no	
drawing no.	18002-303-14